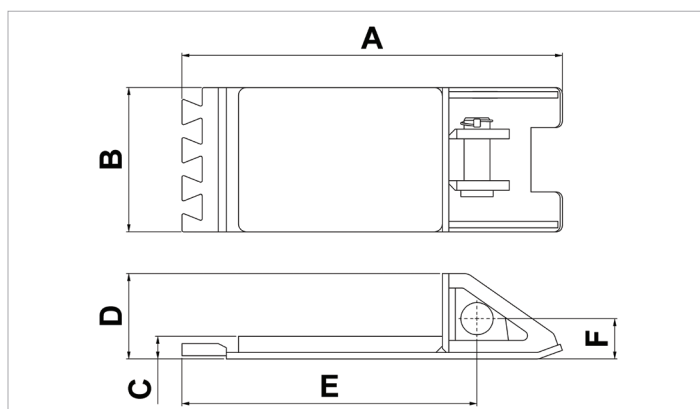
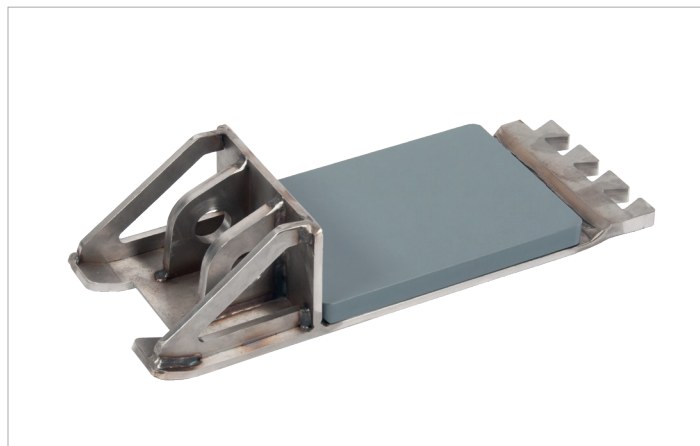


Technical specification sheet

SPPB-LW | Push-Pull Bracket

Specifications		
article number		100.003.315
model		SPPB-LW
short description		Push-Pull Bracket
weight, ready for use	kg	9,5

Technical drawing dimensions		
dimension A	mm	472
dimension B	mm	179
dimension C	mm	28
dimension D	mm	106
dimension E	mm	366
dimension F	mm	50



[holmatro.com](https://www.holmatro.com)

© Holmatro 2021-09-08

While the greatest care has been devoted to the content, it is possible that the information in this printed matter is incorrect or incomplete. Holmatro B.V. and its affiliated companies (hereafter: Holmatro) cannot be held liable in any way for the consequences of activities undertaken on the basis of this printed matter. Values can vary within the manufacturer measurements. If you have any doubts about the correctness or completeness of the information, you shall contact Holmatro (T +31 (0)162-751480). Nothing from this printed matter can be copied and/or made public in any way without the explicit authorisation of Holmatro.