

Technical specification sheet

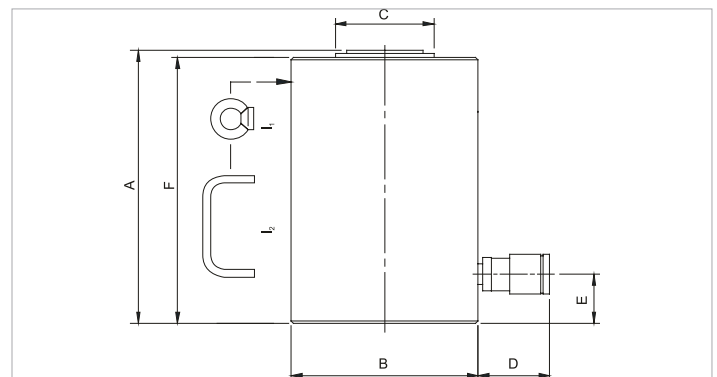
HJ 300 G 15 | Cylinder

Specifications		
article number		100.112.050
short description		Cylinder
model		HJ 300 G 15
max. working pressure	psi	10443
tonnage	lb	661387.0
stroke	in	5.9
closed height	in	15
capacity	lbf	659365
effective pressure area	sq. in.	64.3
required oil content (effective)	oz	210.5
required oil content (press)	oz	210.5
connection		A 118
cylinder type		high tonnage
acting type		single
return type		gravity
material		steel
weight, ready for use	lb	524.7

Technical drawing dimensions		
dimension A	in	15
dimension B	in	12.4
dimension C	in	7.5
dimension D	in	2.8
dimension E	in	2.8
dimension F	in	14.6
I type		[1]

Standard supplied with	
<ul style="list-style-type: none"> • High flow female coupler A118 • Flat saddle 	

Accessories	
Tilting Saddle S 500 TN	100.999.232



holmatro.com

© Holmatro 2024-01-25

While the greatest care has been devoted to the content, it is possible that the information in this printed matter is incorrect or incomplete. Holmatro B.V. and its affiliated companies (hereafter: Holmatro) cannot be held liable in any way for the consequences of activities undertaken on the basis of this printed matter. Values can vary within the manufacturer measurements. If you have any doubts about the correctness or completeness of the information, you shall contact Holmatro (T +31 (0)162-751480). Nothing from this printed matter can be copied and/or made public in any way without the explicit authorisation of Holmatro.