

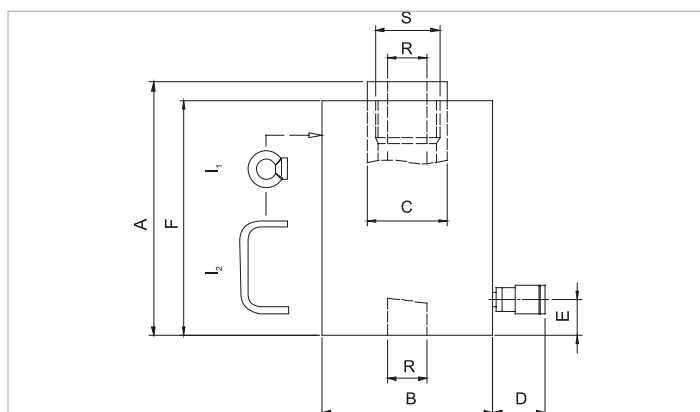
Technical specification sheet

HHJ 12 S 15 | Hollow Plunger Cylinder

Specifications		
article number		100.111.029
short description		Hollow Plunger Cylinder
model		HHJ 12 S 15
max. working pressure	bar/Mpa	720 / 72
tonnage	t	12
stroke	mm	150
closed height	mm	298
capacity	kN/t	126.7 / 12.9
effective pressure area	cm ²	17.6
required oil content (effective)	cc	264
connection		A 118
cylinder type		hollow plunger
acting type		single
return type		spring
material		steel
weight, ready for use	kg	11.0

Technical drawing dimensions		
dimension A	mm	298
dimension B	mm	86
dimension C	mm	40
dimension D	mm	90
dimension E	mm	27
dimension F	mm	298
dimension R	mm	21

Standard supplied with	
• High flow female coupler A118	
• Hollow saddle (with the exception of the HHJ5S2.5, HHJ12S5 and HHJ12S15)	



holmatro.com

© Holmatro 2023-12-07

While the greatest care has been devoted to the content, it is possible that the information in this printed matter is incorrect or incomplete. Holmatro B.V. and its affiliated companies (hereafter: Holmatro) cannot be held liable in any way for the consequences of activities undertaken on the basis of this printed matter. Values can vary within the manufacturer measurements. If you have any doubts about the correctness or completeness of the information, you shall contact Holmatro (T +31 (0)162-751480). Nothing from this printed matter can be copied and/or made public in any way without the explicit authorisation of Holmatro.