

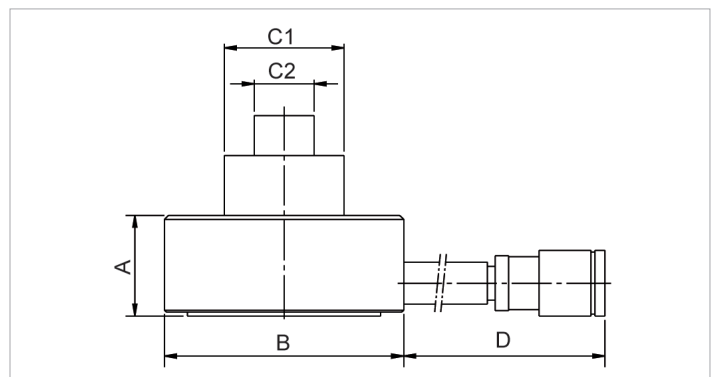
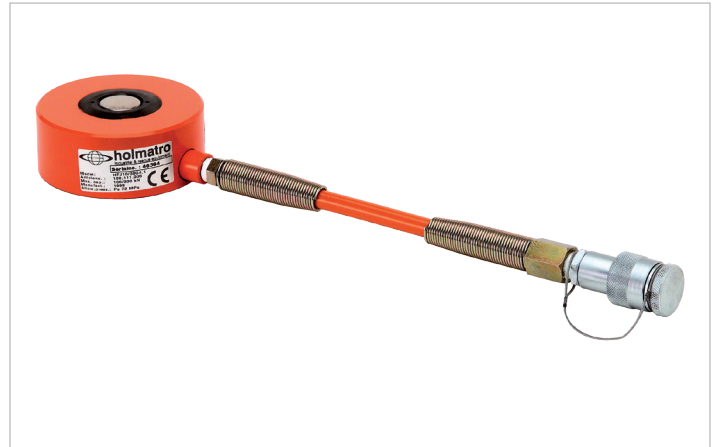
Technical specification sheet

HFJ 10/30 G 4 | Telescopic Cylinder

Specifications		
article number		100.111.005
short description		Telescopic Cylinder
model		HFJ 10/30 G 4
max. working pressure	psi	10443
tonnage	lb	22046.0
stroke	in	1.6
stroke 1st plunger	in	0.8
stroke 2nd plunger	in	0.8
closed height	in	1.9
capacity 1st plunger	lbf	71489
capacity 2nd plunger	lbf	22413
required oil content (effective)	oz	4
connection		A 118
hose		yes
cylinder type		telescopic
acting type		single
return type		gravity
material		steel
weight, ready for use	lb	9.9

Technical drawing dimensions		
dimension A	in	1.9
dimension B	in	4.7
dimension C1	in	2.4
dimension C2	in	1.2
dimension D	in	15.2

Standard supplied with	
• High flow female coupler A118	
• 2-stage plunger	
• HFJ 10/30 G 4 contains a 30 cm connecting hose with anti-kink spring	
• HJ 20/50 G 11 contains a flat saddle	



holmatro.com

© Holmatro 2024-03-18

While the greatest care has been devoted to the content, it is possible that the information in this printed matter is incorrect or incomplete. Holmatro B.V. and its affiliated companies (hereafter: Holmatro) cannot be held liable in any way for the consequences of activities undertaken on the basis of this printed matter. Values can vary within the manufacturer measurements. If you have any doubts about the correctness or completeness of the information, you shall contact Holmatro (T +31 (0)162-751480). Nothing from this printed matter can be copied and/or made public in any way without the explicit authorisation of Holmatro.