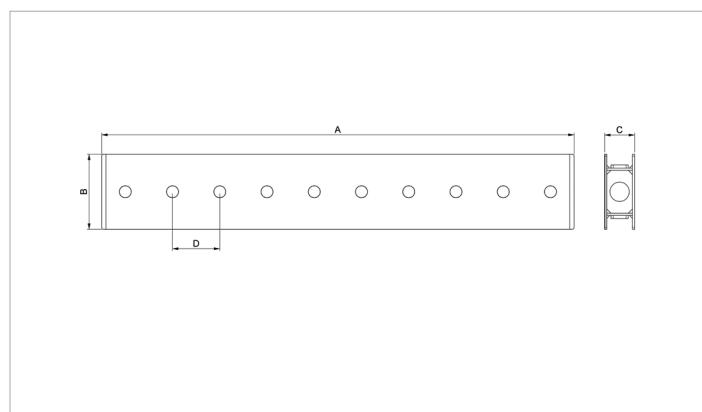


Technical specification sheet

B 30 - 2200 | Beam Rerailing

Specifications		
article number		100.002.915
model		B 30 - 2200
short description		Beam Rerailing
weight, ready for use	kg	62.4

Technical drawing dimensions		
dimension A	mm	2200
dimension B	mm	350
dimension C	mm	140
dimension D	mm	220



[holmatro.com](https://www.holmatro.com)

© Holmatro 2023-12-20

While the greatest care has been devoted to the content, it is possible that the information in this printed matter is incorrect or incomplete. Holmatro B.V. and its affiliated companies (hereafter: Holmatro) cannot be held liable in any way for the consequences of activities undertaken on the basis of this printed matter. Values can vary within the manufacturer measurements. If you have any doubts about the correctness or completeness of the information, you shall contact Holmatro (T +31 (0)162-751480). Nothing from this printed matter can be copied and/or made public in any way without the explicit authorisation of Holmatro.