



Maintenance after use | PRA40, 50, PTR40, 50 | 21371

Page 1 of 2

Maintenance recommendations:

After use (every time)

- **Wear full protective gear during maintenance.**
- **Always act according to the safety instructions as supplied with each tool!**

Necessary equipment: Soft cloth.



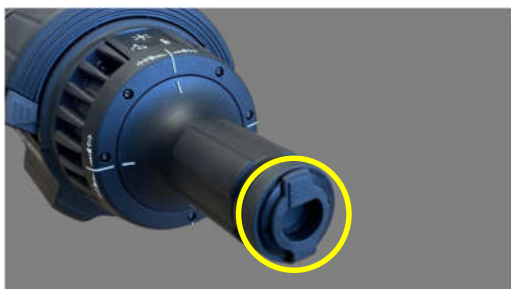
Step 1

- Check:
 - Its general condition
 - Oil leakage
 - Damages that can interfere with functioning or safety
 - Dirt: clean if necessary
 - Readability of the identification / safety label, replace if unreadable
 -



Step 2

- Check functioning of the control handle by operating the tool. (opening, closing and neutral)
- Check direct response of the Power Unit
- Check smooth turning of the control handle
- Check that control handle comes back to neutral when not operated



Step 3

- Check the protective cover on the dead mans' handle:
 - Is in place
 - Undamaged

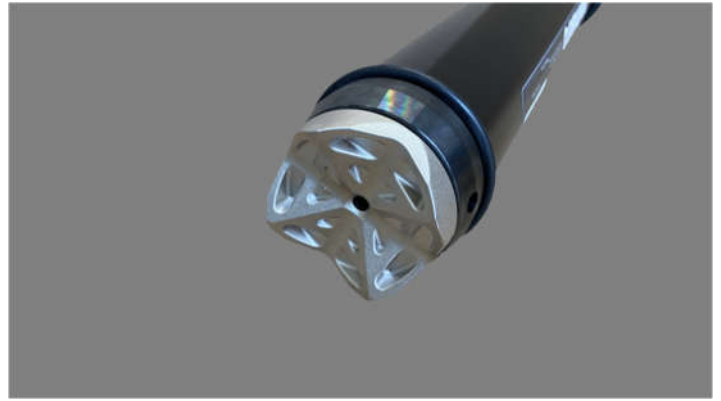
Holmatro Rescue Equipment B.V. | P.O. Box 33 | 4940 AA Raamsdonksveer, the Netherlands | T +31 (0)162 589200 | rescue@holmatro.com | www.holmatro.com

While the greatest care has been devoted to the content, it is possible that the information in this printed matter is incorrect or incomplete. N.V. Holmatro and its affiliated companies (hereafter: Holmatro) cannot be held liable in any way for the consequences of activities undertaken on the basis of this printed matter. If you have any doubts about the correctness or completeness of the information, you shall contact Holmatro. Nothing from this printed matter can be copied and/or made public in any way without the explicit authorization of Holmatro.



Step 4

- Check the crossheads for wear and tear
- Check the functioning of the laser pointer
- Check the function of the LEDs
- Check the carrying handle for damage and that it is firmly fastened to the tool



Step 5

- Check the extension tube crosshead for wear and tear (if applicable)



Step 6

- Check if the extension tube fits



Step 7

- Check if the springs are pressing the lock
- Check if the lock holds the extension tube



Step 8

- Check if the battery connectors are clean, free from corrosion and undamaged



Step 9

- Check if the battery is fully charged
- Store the tool with the plunger slightly outwards 1 cm