



Maintenance after use | PCU30CL, 40, 50, 60 | 21370

Page 1 of 2

Maintenance recommendations:

After use (every time)

- **Wear full protective gear during maintenance.**
- **Always act according to the safety instructions as supplied with each tool!**

Necessary equipment: Teflon lubrication oil, WD40, soft cloth.



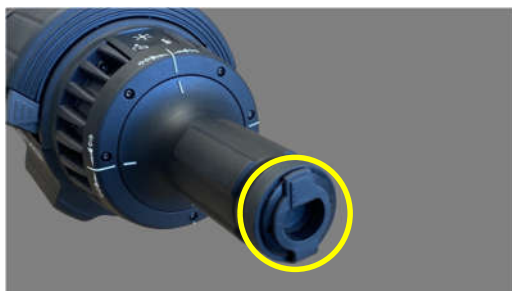
Step 1

- Check:
 - Its general condition
 - Oil leakage
 - Damages that can interfere with functioning or safety
 - Dirt: clean if necessary
 - Readability of the identification / safety label, replace if unreadable



Step 2

- Check the proper functioning of the dead mans' handle
- Check:
 - whether the control handle moves smoothly
 - returns in neutral position
 - the blades move according the control symbols
 - the blades move smoothly



Step 3

- Check the protective cover on the dead mans' handle:
 - Is in place
 - Undamaged

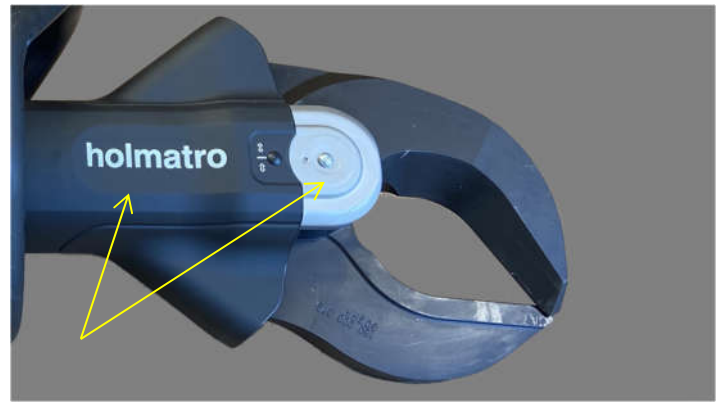
Holmatro Rescue Equipment B.V. | P.O. Box 33 | 4940 AA Raamsdonksveer, the Netherlands | T +31 (0)162 589200 | rescue@holmatro.com | www.holmatro.com

While the greatest care has been devoted to the content, it is possible that the information in this printed matter is incorrect or incomplete. N.V. Holmatro and its affiliated companies (hereafter: Holmatro) cannot be held liable in any way for the consequences of activities undertaken on the basis of this printed matter. If you have any doubts about the correctness or completeness of the information, you shall contact Holmatro. Nothing from this printed matter can be copied and/or made public in any way without the explicit authorization of Holmatro.



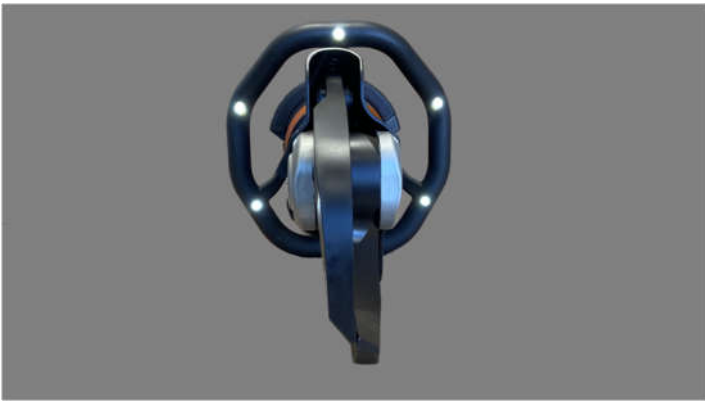
Step 3

- Check the blades for damage. Replace if necessary.
- Spray a little WD40 on the blades to prevent corrosion.



Step 4

- Check the protective covers if they are damaged. Replace if necessary.



Step 5

- Check if the LEDs are working.
- Check the carrying handle for damage and that it is firmly fastened to the tool



Step 6

- Clean the hinges and grease them with Teflon oil. (also the opposite sides)



Step 7

- Check if the battery connectors are clean, free from corrosion and undamaged



Step 8

- Check if the battery is fully charged
- Check that the blades are not completely closed. Store the tool with the tips just overlapped.