

HYDRAULIC SOLUTIONS FOR HEAVY LIFTING & TRANSPORTATION





POWERING INNOVATION

Holmatro Hydraulic Solutions is at the forefront of innovation in high-pressure hydraulic tools, systems, and services. Our strong legacy & dedication to excellence allow us to understand our customers' needs. Drive the transition to green energy, enable civil engineering companies to build roads, bridges, or move buildings, and help to place trains back on track, reduce downtime for production facilities & make working with high-pressure hydraulics safer. For all these applications and more, we deliver solutions that enhance our clients' efficiency, safety, and performance.

36

5-11033
00-PI-8
of F.57



TABLE OF CONTENTS

HEAVY LIFTING & TRANSPORTATION

- 6 Ring Climbing Cylinder set
 - 8 Split Flow Pump
 - 9 Skidding systems
 - 10 Skidding system - 200 Ton
 - 17 Skidding system - 400 Ton
 - 22 Step jack
-

HOLMATRO HYDRAULIC SOLUTIONS

- 24 About Us
 - 26 Our Solutions
 - 28 Partner Program
 - 29 Premium Service Program
 - 30 Do you feel the pressure to work Safe?!
 - 31 Holmatro office & partners
-



HEAVY LIFTING & TRANSPORTATION

In Heavy Lifting & Transportation, control is key. Our solutions are designed to be safe, reliable, and user-friendly for the construction, installation, and offshore markets. Whether it's lifting, moving, pushing, or pulling, our systems move with the project and ensure efficient and safe handling of heavy loads.

For offshore and OEM markets, we provide hydraulic solutions that withstand the most extreme conditions. Thanks to close cooperation with OEM partners, our systems integrate seamlessly into their processes. This way, we strengthen each other's success, regardless of the circumstances.



RING CLIMBING CYLINDER SET





We aim to provide our customers with the best suitable and safe solution for their applications. Our Ring Climbing Cylinder set is the perfect example of product development, based on customer needs. In this case; the need for a safer, ergonomic and time efficient solution to handle heavy loads, in locations with limited access.



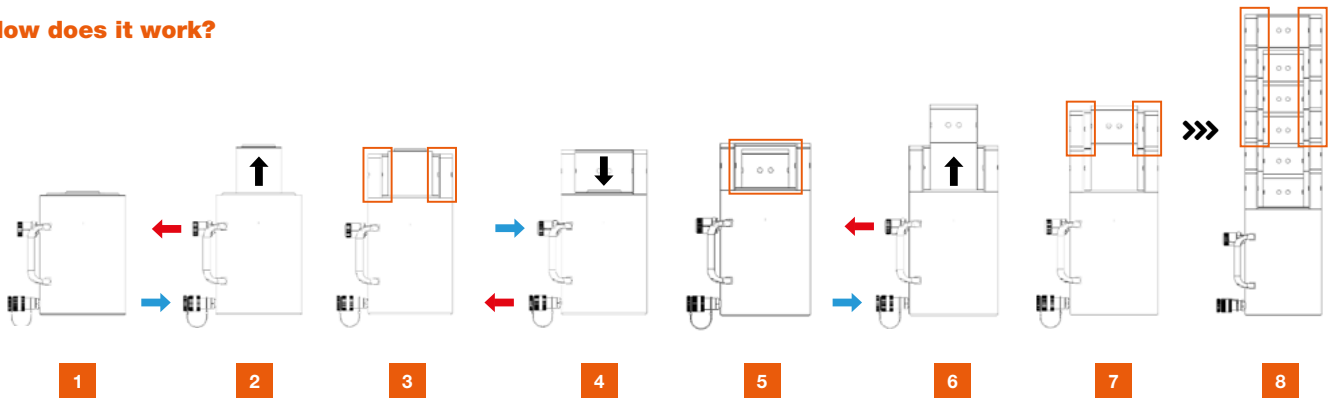
Features & benefits

- The Ring climbing cylinder sets allow you to execute challenging lifting operations, in limited space.
- Safely achieve a lifting height of up to 600mm
- Less need for stacking wood, filler blocks
- Small footprint
- Light weight; ergonomic
- Lifting & securing the load; safe

specifications		HARC 100H13
art no		101.003.014
max. working pressure	bar/mpa	720 / 72
	psi	10,443
tonnage	t	100
stroke	mm	130
	in	5,1
closed height	mm	300
	in	11,8
capacity	kN/t	1030,6/ 105,1
effective pressure area (press)	cm ²	143,1
	in ²	22,2
effective pressure area (retract)	cm ²	56,5
	in ²	8,8
required oil content (press)	cc	1860
	oz	62,9
required oil content (retract)	cc	735
	oz	24,9
connection		A 118
cylinder type		ring climbing
acting type		double
return type		hydraulic
material		aluminum
weight, ready for use	kg	23
	lb	50,7

stacking rings		Filling height	Art. no.	Reg. qty.
	Stacking ring, anodize black	100	101.001.625	6
Insert blocks		Filling height	reg. qty.	
	Start -> Start Insert block, anodize clear	80	101.002.966	1
	Insert block, anodize black	100	101.002.965	4
Acc			reg. qty.	
	Fork; to safely place the stacking rings		150.001.856	1

We advise 4 sets + 1 spare set (to avoid down time).

How does it work?**Feedback from our customers:**

"This product enables us to save a lot of handling and support material time."

"Best Holmatro product ever!"

"Light weight and very user friendly. Really ergonomic."

"Stack Rings, not Wood!"

"These sets are always in use."

"ROI is lower due to quicker way of working compared to standard climbing cylinders."

"The ideal hydraulic system to unload from SPMT to foundation."

"We should have had these 10 years earlier!"

The sets were designed & developed in close cooperation with heavy lifting specialist Mammoet;

"We regularly carry out projects for an energy producer where we have to replace 3 transformers. This means we have to move 6 transformers in a few days, according to a schedule agreed in advance with the customer". He concluded, "Holmatro's lightweight aluminum cylinders significantly reduce physical labor, making work much more enjoyable, resulting in a positive effect on health, ergonomics and safety. But it also saves a lot of time. Holmatro's aluminum cylinders are also regularly used in other projects where there is no time pressure". (Jaap Jan den Boer, project supervisor Mammoet)



SPLIT FLOW PUMP

The Holmatro split flow pump 1.15Q50E/F is a hydraulic pump designed to operate multiple cylinders simultaneously in a synchronized manner. It delivers equal oil flow to all four outlets, ensuring that heavy loads can be lifted or moved safely and evenly. This makes it ideal for applications such as lifting heavy loads with ring-climb cylinders or moving large structures with skid systems.

Split-flow pumps offer efficient, safe, and controlled operation, making them a superior choice over separate pumps when precise synchronization is essential.



Features & benefits

- Pump with 4 separate outlets
- Manual valves for individual or simultaneous operation
- Frequency controller, allows setting the output between 0.46 L/min and 1.15 L/min per outlet
- Manual load lowering valves to control return oil, enabling controlled and stable descent under load

Standard supplied with

- 4/3 valves, manually operated
- Pressure gauges
- Load lowering valves, manually operated
- Frequency controller
- Oil level-temperature switch
- Male A119 & female A118 couplers
- Protection frame + rotatable lifting lugs
- Drip tray

1.15 Q 50 E/F		
art no		101.003.166
max. working pressure	bar/Mpa	720 / 72
	psi	10.443
capacity oil tank (effective)	cc	50000
	oz	1690,7
number of outputs		4
number of stages		1
first stage output / min.	cc	1150
	oz	38,9
first stage pressure range	bar/Mpa	0 - 720 / 0 - 72
	psi	0 - 10.443
operator type		electric motor
engine		400/690 VAC - 5.5kW - 50/60Hz - 3 Ph
speed	rpm	1465
weight, ready for use	kg	325,0
	lb	716,5
dimensions (LxWxH)	mm	920 x 770 x 1247
	in	36.2 x 30.3 x 49.1

SKIDDING SYSTEMS

User-friendly, modular skidding systems for the horizontal movement of heavy loads

Holmatro's Skidding Systems provide reliable and effective solutions for transporting industrial objects of exceptional sizes and weights to their intended locations. With the flexibility and strength of these modular systems, moving heavy loads becomes a manageable and efficient process, offering an alternative to traditional crane-based operations. Thanks to the user friendly modular construction of both systems they are easy to adapt to each load size and project.

200-ton Skidding System – Light weight

This system is **exceptionally lightweight** and designed for loads up to 200 tons. It boasts an **impressively low construction height** and consists of **lightweight components**. Set up can easily be done by two persons; no need for additional lifting tools like a forklift. The 200-ton Skidding System is ideal for moving objects in situations with limited insertion space.

400-ton Skidding System

The 400-ton Skidding System is extremely robust and capable of handling heavy loads, making it suitable for moving very large and heavy objects, such as large transformers. This system's strength ensures **smooth and efficient movement even for highly challenging tasks**.

Features & benefits

- Each system consists of a set of tracks, beams and push-pull units with a push-pull cylinder.
- The load rests on the beams, which move horizontally in the tracks.
- The tracks are fitted with **extremely low-friction sliding pads**.
- The beams are connected to the push-pull units, with **equal pushing and pulling capacity**.
- This allows the system to perform both actions safely and in a controlled manner.
- The push-pull units are connected to a hydraulic pump via hoses.
- This powerful Twin pump has two **equal oil flows** that can be controlled independently.

Pieterjan Van Iseghem, Managing Director Heavy Lifting & Handling:

"The destination in Stonehaven could only be reached via a poorly accessible, narrow and very steep slope. We even had to get the assistance of a dumper truck for the last bit of transportation. Eventually the transformer was unloaded at the right place and positioned on the foundation provided by using cylinders and Holmatro's Skidding System. Without this system we would not have been able to carry out the job so safely and controlled."



SKIDDING SYSTEM - 200 TON

light weight

Holmatro's light weight skidding system offers an **extremely lightweight, fast and easy to set up solution for the horizontal movement** of objects and installations with exceptional sizes and low insertion space. Due to its weight and ergonomic design the light weight skidding system can easily be handled & positioned by just one or two persons, without the need for a forklift or use of extra equipment. **Changing the push or pull direction can be done in a split of a second!** The maximum capacity of the system is 200 tons, assuming two skidding units are used as described in the advised starter kit.

Features & benefits

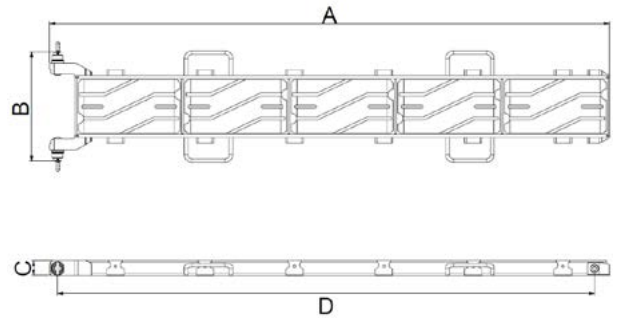
- 200-ton capacity: **2 X 100 ton**
- **Extreme low construction height**; total height is *only* 56 mm / 2.20 inches
 - allows for efficient operation in spaces with limited insertion space.
- Lightweight components with optimally placed grips
 - **Easy to carry, handle, position and assemble by one or two persons** (no forklift needed)
 - Reduces the physical burden
 - Maximum performance at a minimum weight
- **Modular system**
 - Easy to adapt to different load sizes and projects
 - Plug and play; easy to assemble without the use of extra equipment
- Push-pull unit equipped with **equal capacity for both pushing and pulling**;
 - Ability to push or pull the load into position, instead of only pushing
 - Accurate control in both directions
- **Quick Direction Change**: the system's handle allows for a swift change of direction, enabling seamless switching between push and pull directions. **Without repositioning!**
- With an **internal return line** in the push-pull cylinder,
 - The risk of damage to the line is reduced
 - Maintaining equal hose length for ingoing and outgoing oil.
- The push-pull cylinder comes with **integrated safety features**, providing protection against overpressure for enhanced safety during operation.
- High beams form fit the standard beams; in case of loads whereby the contact surface not entirely fits on the front side of the push-pull unit
 - Total load is optimally spread across the entire system
- **Low Sliding Resistance**: sliding pads with an extremely low friction coefficient minimize sliding resistance between tracks and beams, allowing smooth movement during skidding operations.

On the next pages, you will find Holmatro's advised startket kit for 200-tons light weight skidding system.



skid track - 100t - 1800mm

8 pcs



specifications		ST-LW
art no		101.001.843
weight, ready for use	kg	37.5
	lb	82.7

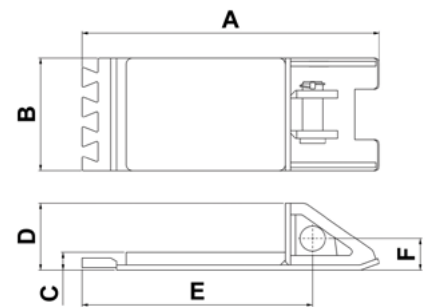
Technical drawing dimensions		
dimension A	mm	1877
	in	73.9
dimension B	mm	385
	in	15.2
dimension C	mm	50
	in	2
dimension D	mm	1800
	in	70.9

Features & benefits

- Length 1800 mm, only 37,5 kg
- Easy set-up by means of snaplocks; no bolts or other tools required
- Easy to replace sliding pads

skid push / pull bracket - 100t

2 pcs



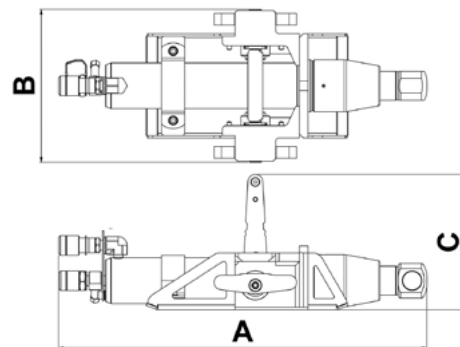
specifications		SPPB-LW
art no		100.003.315
weight, ready for use	kg	9.5
	lb	20.9

Technical drawing dimensions		
dimension A	mm	472
	in	18.6
dimension B	mm	179
	in	7
dimension C	mm	28
	in	1.1
dimension D	mm	106
	in	4.2
dimension E	mm	366
	in	14.4
dimension F	mm	50
	in	2

Features & benefits

- Interlocks without need of bolts or other tools
- Low height
- Made out of stainless steel

skid push / pull unit - 100t 2 pcs



specifications		SPPU-LW
art no		100.003.366
max. working pressure	bar/mpa	720 / 72
	psi	10.443
tonnage	t	10
stroke	mm	330
	in	13
capacity (press)	kN/t	101.3 / 10.3
capacity (retract)	kN/t	93.9 / 9.6
effective pressure area (press)	cm ²	32.66
effective pressure area (retract)	cm ²	13.54
required oil content (press)	cc	1078
	oz	36.5
required oil content (retract)	cc	447
	oz	15.1
acting type		double
return type		hydraulic
material		steel
weight, ready for use	kg	26.0
	lb	57.3

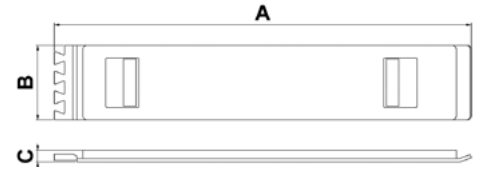
Technical drawing dimensions		
dimension A	mm	637
	in	25.1
dimension B	mm	264
	in	10.4
dimension C	mm	233
	in	9.2

Features & benefits

- Light weight; only 26 kg
- Easy pinn connection to push/pull bracket
- Quick direction change without repositioning; just flip the lever/handle!
- Internal return line
- Equal pushing & pulling capacity

skid beam - 100t - 1000mm

2 pcs



specifications		SB-LW 1
art no		100.003.311
weight, ready for use	kg	15.5
	lb	34.2

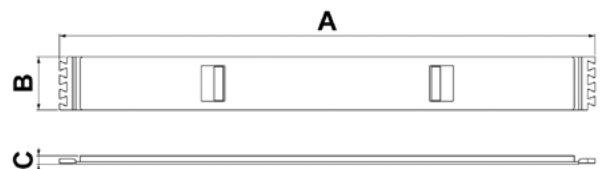
Technical drawing dimensions		
dimension A	mm	1005
	in	39.6
dimension B	mm	179
	in	7
dimension C	mm	28
	in	1.1

Features & benefits

- Interlocks without need of bolts or other tools
- Low height
- Made out of (low friction) stainless steel

skid beam - 100t - 1800mm

2 pcs



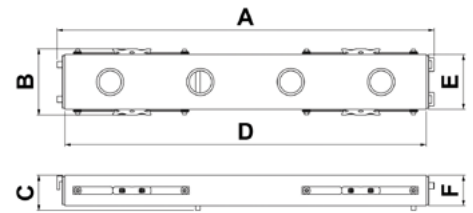
specifications		SB-LW 1.8
art no		100.003.313
weight, ready for use	kg	28.5
	lb	62.8

Technical drawing dimensions		
dimension A	mm	1805
	in	71.1
dimension B	mm	179
	in	7
dimension C	mm	28
	in	1.1

Features & benefits

- Interlocks without need of bolts or other tools
- Low height
- Made out of (low friction) stainless steel

skid high beam - 100t - 1200mm (optional) 2 pcs



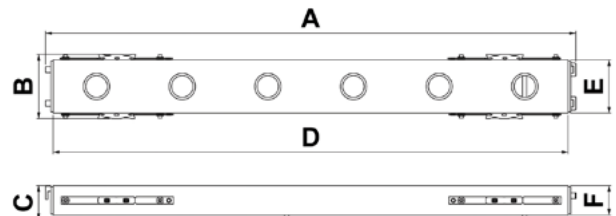
specifications	SHB-LW 1.2	
art no	100.003.427	
weight, ready for use	kg	31.0
	lb	34.2

Technical drawing dimensions		
dimension A	mm	1236
	in	48.7
dimension B	mm	250
	in	9.8
dimension C	mm	115
	in	4.5
dimension D	mm	1184
	in	46.6
dimension E	mm	180
	in	7.1
dimension F	mm	100
	in	3.9

Features & benefits

- Form fit the standard beams (art. No. 100.003.311)
- For even load distribution

skid high beam - 100t - 1800mm (optional) 2 pcs



specifications	SHB-LW 1.8	
art no	100.003.418	
weight, ready for use	kg	44.4
	lb	97.9

Technical drawing dimensions		
dimension A	mm	1796
	in	70.7
dimension B	mm	250
	in	9.8
dimension C	mm	115
	in	4.5
dimension D	mm	1744
	in	68.7
dimension E	mm	180
	in	7.1
dimension F	mm	100
	in	3.9

Features & benefits

- Form fit the standard beams (art. No. 100.003.313)
- For even load distribution

twinpump - 09 T 12 E - trolley 1 pcs



Standard supplied with

- Double acting valves (2x)
- Pressure gauges (2x)
- Couplers
- Pump Trolley

specifications		09 T 12 E / 09 T 12 F*	
art no		100.152.220 / 101.003.032*	
max. working pressure	bar/mpa	720 / 72	
	psi	10.443	
capacity oil tank (effective)	cc	7000	
	oz	236,7	
number of outputs		2	
number of stages		1	
first stage output / min.	cc	900	
	oz	30,4	
first stage pressure range	bar/mpa	0 - 720 / 0 - 72	
	psi	0 - 10.443	

* E = 400V - 50 Hz - 3 Ph, F = 460V - 60 Hz - 3 Ph

specifications		09 T 12 E / 09 T 12 F*	
operator type		electric motor	
engine		400 VAC - 2.2 kW - 50 Hz - 3 Ph	
		460 VAC - 2.2 kW - 60 Hz - 3 Ph*	
speed	rpm	1450	
weight, ready for use	kg	120,0	
	lb	264,6	
dimensions (LxWxH)	mm	700 x 700 x 1390	
	in	27.6 x 27.6 x 54.7	

Features & benefits

- Split flow pump; 2 equal flows for both sides
- Easy, ergonomic transport thanks to the included trolley

extension hose - with couplers - VL 20 SOU - 20m 4 pcs



specifications		VL 20 SOU	
art no		100.572.320	
max. working pressure	bar/mpa	720 / 72	
	psi	10.443	
color		orange	
hose connection A		A 119	
hose connection B		A 118	
length	m	20	
	ft	66	

Safety factors / tests	
hydraulic safety ratio hose	4:1

skid track storage frame - 100t

1 pcs



specifications	STSF-LW
art no	100.182.390

Features & benefits

- Equipped for storage of 10 tracks per frame
- Easy to store after use; stackable with forklift

skid spare sliding pad - 100t

5 pcs per track



specifications	model
art no	101.001.842

Features & benefits

- Including 'sloping entry side' to ensure a fluent load transition
- The grooves in the pads were designed to act both as a dirt drain & wear indicator
- Low friction coefficient of 0.1
- Excellent resistance against indentations

SKIDDING SYSTEM - 400 TON

Holmatro's 400-ton Skidding System consists of robust, shock-resistant parts. The maximum capacity of the system is 400 tons, assuming two skidding units are used. The total construction height is 244 mm (9.61 inches) and can **carry loads over a relatively large unsupported span when the surface is uneven**. The Skidding System is driven by a powerful hydraulic twin (split flow) pump.

Our tracks, with a standard length of 2 meters, are easy to connect to each other using steel pins (no bolted connections). Extremely rigid steel beams with a stainless steel sliding surface are placed in the tracks, which reduces the resistance on the tracks and the chance of bending due to small loads to virtually zero. The push-pull units are fitted with **easily dismantled wings that allow the push or pull direction of the system to be changed quickly**. The cylinders in the push-pull units are connected with hydraulic hoses to a powerful hydraulic pump.

Features & benefits

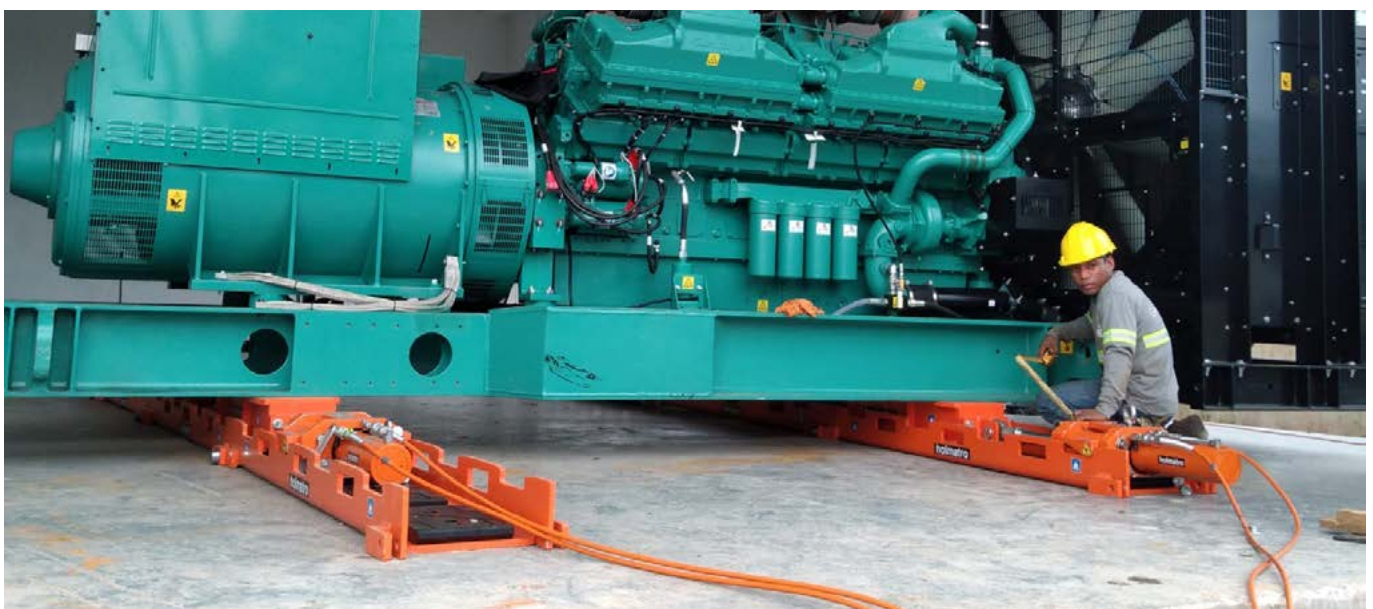
- 400-ton capacity: **2 X 200 ton**
- Extremely rigid beams; does not bend with small loads
- **Modular system**
 - Easy to adapt to different load sizes and projects
 - Plug and play; easy to assemble without the use of extra equipment
- Push-pull cylinder with **equal capacity for both pushing and pulling**
 - Ability to push or pull the load into position, instead of only pushing
 - Accurate control in both directions
- **900mm gap coverage** at full capacity

Demountable wings; allows for a swift change of direction, enabling seamless switching between push and pull directions.

Without repositioning!

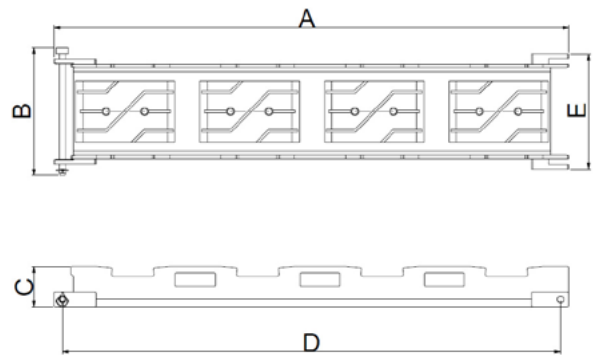
- The push-pull cylinder comes with **integrated safety features**, providing protection against overpressure for enhanced safety during operation.
- **Low Sliding Resistance:** sliding pads with an extremely low friction coefficient minimize sliding resistance between tracks and beams, allowing smooth movement during skidding operations.

On the next pages, you will find Holmatro's advised startket kit for 400-tons light weight skidding system.



skid track - 200t - 2000mm

8 pcs



specifications		ST-S
art no		101.001.829
weight, ready for use	kg	160.0
	lb	352.7

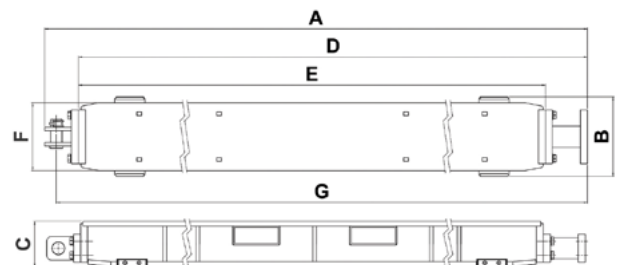
Technical drawing dimensions		
dimension A	mm	2068
	in	81.4
dimension B	mm	510
	in	20.1
dimension C	mm	162
	in	6.4
dimension D	mm	2000
	in	78.7
dimension E	mm	460
	in	18.1

Features & benefits

- Easy set-up by means of pins; no bolts or other tools required
- Equipped with lifting slots for fork lifts
- Easy to replace sliding pads

skid beam - 200t - 2995mm

2 pcs



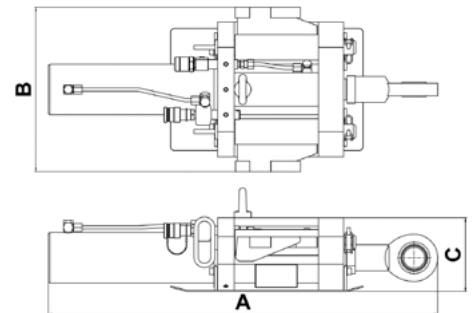
specifications		SB-S
art no		100.002.526
weight, ready for use	kg	416.0
	lb	917.1

Technical drawing dimensions		
dimension A	mm	3045
	in	119.9
dimension B	mm	340
	in	13.4
dimension C	mm	195
	in	7.7
dimension D	mm	2900
	in	114.2
dimension E	mm	2720
	in	107.1
dimension F	mm	290
	in	11.4
dimension B	mm	2995
	in	117.9

Features & benefits

- Easy connection to push-pull unit; no tools required
- Equipped with lifting slots for fork lifts
- Extension with more beams possible

skid push / pull unit - 200t 2 pcs



specifications		SPPU-S	
art no		100.002.510	
max. working pressure	bar/mpa	720 / 72	
	psi	10.443	
tonnage	t	26	
stroke	mm	520	
	in	20,5	
capacity (press)	kN/t	255 / 26	
capacity (retract)	kN/t	267 / 27.2	
effective pressure area (press)	cm ²	56.7	
effective pressure area (retract)	cm ²	37.1	
required oil content (press)	cc	2950	
	oz	99,8	
required oil content (retract)	cc	1929	
	oz	65,2	
acting type		double	
return type		hydraulic	
material		steel	
weight, ready for use	kg	114	
	lb	251,3	

Technical drawing dimensions			
dimension A	mm	926	
	in	36,5	
dimension B	mm	390	
	in	15,4	
dimension C	mm	175	
	in	6,9	

Features & benefits

- Easy pin connection to the beam
- Equal pushing & pulling capacity
- Swift change of direction thanks to demountable wings.

Without repositioning!



twinpump - 09 T 12 E - trolley 1 pcs



Standard supplied with

- Double acting valves (2x)
- Pressure gauges (2x)
- Couplers
- Pump Trolley

specifications		09 T 12 E / 09 T 12 F*	
art no		100.152.220 / 101.003.032*	
max. working pressure	bar/mpa	720 / 72	
	psi	10.443	
capacity oil tank (effective)	cc	7000	
	oz	236,7	
number of outputs		2	
number of stages		1	
first stage output / min.	cc	900	
	oz	30,4	
first stage pressure range	bar/mpa	0 - 720 / 0 - 72	
	psi	0 - 10.443	

* E = 400V - 50 Hz - 3 Ph, F = 460V - 60 Hz - 3 Ph

specifications		09 T 12 E / 09 T 12 F*	
operator type		electric motor	
engine		400 VAC - 2.2 kW - 50 Hz - 3 Ph	
		460 VAC - 2.2 kW - 60 Hz - 3 Ph*	
speed	rpm	1450	
weight, ready for use	kg	120,0	
	lb	264,6	
dimensions (LxWxH)	mm	700 x 700 x 1390	
	in	27.6 x 27.6 x 54.7	

Features & benefits

- Split flow pump; 2 equal flows for both sides
- Easy, ergonomic transport thanks to the included trolley

extension hose - with couplers - VL 20 SOU - 20m

4 pcs



specifications		VL 20 SOU	
art no		100.572.320	
max. working pressure	bar/mpa	720 / 72	
	psi	10.443	
color		orange	
hose connection A		A 119	
hose connection B		A 118	
length	m	20	
	ft	66	

Safety factors / tests	
hydraulic safety ratio hose	4:1

skid track storage frame - 200t

1 pcs



specifications	STSF-S
art no	100.003.255

Features & benefits

- Equipped for storage of 8 tracks per frame
- Easy to store after use; stackable with forklift

skid spare sliding pad - 200t

4 pcs per track



specifications	model
art no	101.000.497

Features & benefits

- Including 'sloping entry side' to ensure a fluent load transition
- The grooves in the pads were designed to act both as a dirt drain & wear indicator
- Low friction coefficient of 0.1
- Excellent resistance against indentations



STEP JACK

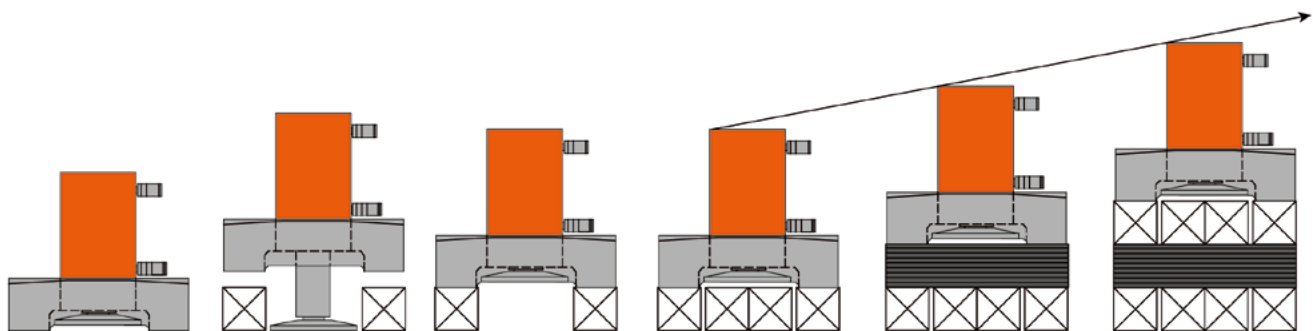


A step jack is a hydraulic cylinder, fitted with a square foot plate, which wooden beams can support. By stacking beams and operating the cylinder, objects can be lifted and supported up to heights of 2-3 meters.

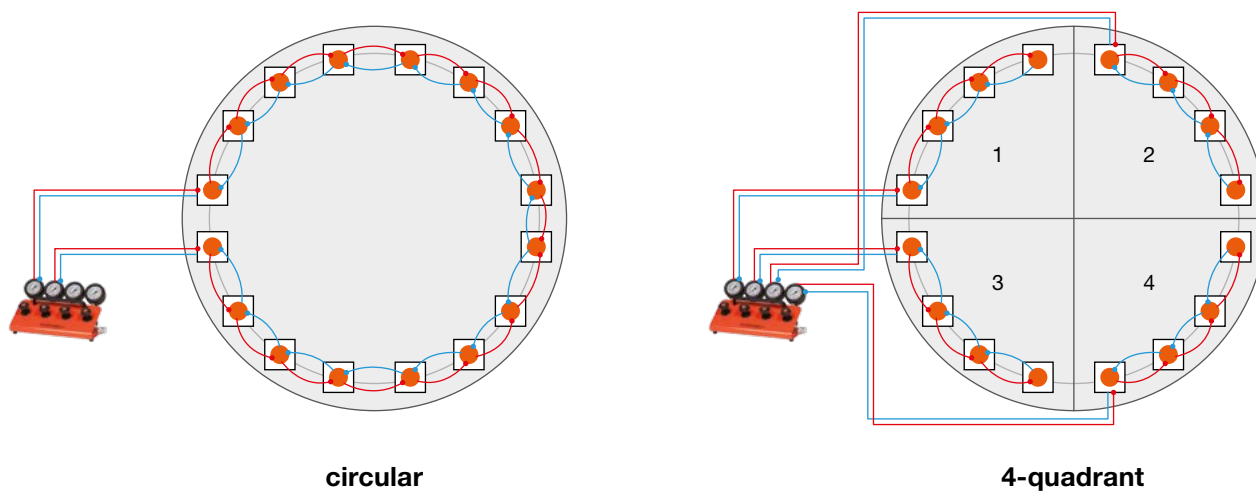
A Holmatro (oil) Step Jack, Storage Tank Lifting system usually contains:

- A set of Step jacks with a capacity of 25, 35-, 50-, 100-, or 200-Ton cylinders
- A set of hydraulic hoses
- Hydraulic pump unit: split flow (high oil tank capacity), including flow panels/control handles to manage the load in a safe & controlled way.

How does it work?



There are two types of step jack configurations commonly used for storage tank lifting: a circular setup and a 4-quadrant setup.



The Holmatro Step Jack System is preferably equipped with flat-face hydraulic quick couplers, ensuring a secure, fast connection. The flat connecting surfaces make the couplers easy to clean and maintain.

The required hoses are supplied in two distinct colours: orange for the pressure side and green for the return side. All orange hoses are fitted with male couplers, while all green hoses are fitted with female couplers. **This colour-coding and coupling configuration ensures an easy, user-friendly, and safe connection of all hoses and components.**



INTERESTED IN OUR STEP JACK SYSTEMS?

Interested in our Step Jack Cylinders & systems? We are available for support. Please scan the QR code to submit your request for more information.



ABOUT US

As a leading Dutch company, Holmatro Hydraulic Solutions operates worldwide in high-pressure hydraulic solutions. Innovation, quality, and extreme customer focus are the foundation of our company. Thanks to our long-standing history and dedication to craftsmanship, we know exactly what our customers need and deliver high-end hydraulic Solutions that combine performance, safety, and reliability.



Mazak QUICK TURN NEXUS 350-II M

holmatro

MAZATROL MATRIX NEXUS

Mazak VOICE ADVISER

MAZATROL MATRIX





LIFTING

For a wide range of industrial markets, our cylinders, pumps, and system components provide controlled force and maximum flexibility, from 5 to 300 tons. All our high-quality and reliable hydraulic Solutions are designed for precision work in industrial applications and are delivered through our global partner network.

HEAVY LIFTING & TRANSPORTATION SYSTEMS

In heavy lifting and transportation, control is key. Our solutions are designed to be safe, reliable, and user-friendly for the construction, installation, and offshore markets. Whether it's lifting, moving, pushing, or pulling, our systems move with the project and ensure efficient and safe handling of heavy loads. For offshore and OEM markets, we provide hydraulic solutions that withstand the most extreme conditions. Thanks to close cooperation with OEM partners, our systems integrate seamlessly into their processes. This way, we strengthen each other's success, regardless of the circumstances.



RERAILING — VEHICLE RECOVERY

We boast over +55 years of experience in designing, developing & producing high-pressure hydraulic tools & systems for both the Industrial and Rescue markets. We constantly challenge ourselves to deliver innovative, reliable, and safe solutions to our customers. This drive led us to explore the world of rerailling & recovery, where we seek to utilize our knowledge and expertise to perform this crucial task with enhanced safety, efficiency, and control, ultimately bringing more cost-effectiveness to operations.

CUTTING

Holmatro is a globally recognized expert in hydraulic cutting solutions, developed for continuous use in tough environments, with safety and ergonomics as starting points. They are widely used in recycling, demolition, production, and decommissioning. Their strength, reliability, and precision make them indispensable for professionals facing challenging cutting tasks.

POWERING INNOVATION TOGETHER



OUR PARTNER NETWORK

At Holmatro Hydraulic Solutions, we strongly believe in the power of joint success. Growing together by means of Partnership, supported by our Partner Program. Combining our +55 years of experience in high-pressure hydraulics with knowledge and expertise of the local market, we can form a winning team. We are proud of our network of dedicated local partners; they give excellent support to our customers with their expertise and knowledge of their market.

'HOLMATRO AND FYNS KRAN UDSTYR A/S HAS A PARTNERSHIP FOR MANY YEARS. WE ARE VERY HAPPY TO HAVE A PARTNERSHIP WITH A VERY SERIOUS AND DEDICATED COMPANY LIKE HOLMATRO. WE HAVE CHOSEN A PARTNERSHIP WITH HOLMATRO BECAUSE THEY DELIVER TOP QUALITY PRODUCTS WHICH IS A PERFECT MATCH WITH THE OTHER PRODUCTS IN OUR LARGE PRODUCT PORTFOLIO OF LIFTING GEAR.'

- Torben Wiberg, Product Manager
Fyns Kran Udstyr A/S



PREMIUM SERVICE PROGRAM

'The Holmatro's Premium Service center helps Mennens Groningen to be successful! Not only in selling high-pressure hydraulic tools, but also in being a true, reliable partner for our customers. A big advantage of the Holmatro Premium Service Center is the way how we test; dynamic testing in a controlled environment. This results in a safer way of working for both our employees and customers, leading to more long-term relationships.'

- David Posthumus, Director
Mennens Groningen

When working in demanding circumstances with high-pressure hydraulics, safety should always come first!

With +55 years of experience in producing high-pressure hydraulics, we are committed to providing our users with the safest, most reliable, and durable solutions, along with excellent service & great customer care.

Our trusted, local Service partners are vital in creating a safer work environment. Correct & periodic maintenance can prevent unnecessary damage, costs, and unsafe situations. Together, we offer you a complete service program for your Cutting Tools, to ensure safety and increase the lifespan of your tools.

DO YOU FEEL THE PRESSURE TO WORK SAFE?!

Working with 700bar is not to be taken lightly. The Holmatro Testteam gives an animated look on working with high pressure hydraulics. How powerful are hydraulic systems? Where do you have to pay attention to? And how do you identify possible risks? Check out our Testteam videos!

INFERIOR FITTINGS AT 720 BAR



THE POWER OF HYDRAULICS



ALUMINUM VERSUS STEEL



720 BAR OIL INJECTION CAUSED BY DAMAGED HOSE



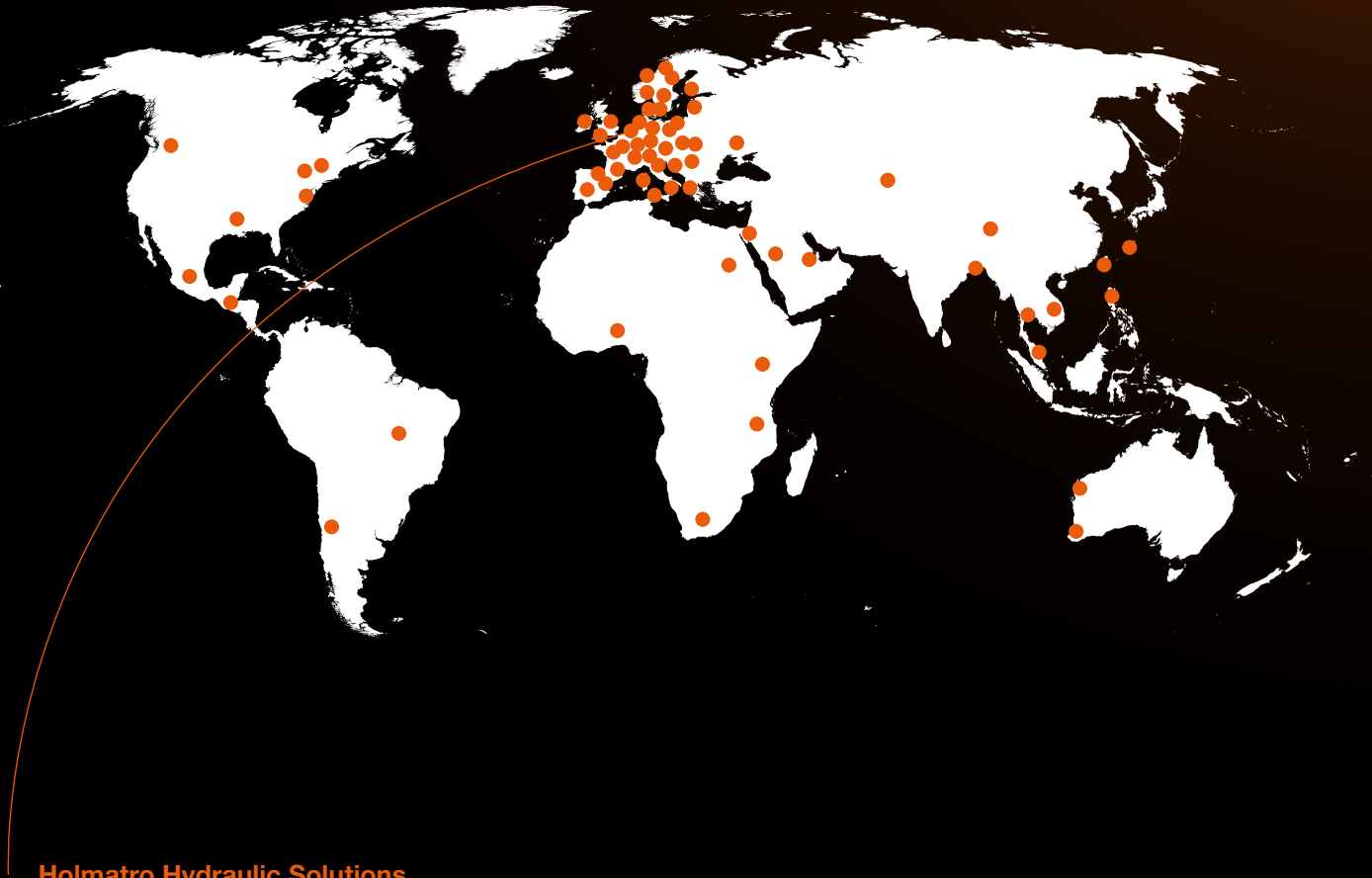
**DOWNLOAD OUR
FREE SAFETY GUIDES,
USER TIPS AND MORE**

HOLMATRO OFFICE AND PARTNERS

Thanks to our worldwide sales and service network there's always a Holmatro representative nearby, ready to assist you!

Find your nearest
Holmatro representative on
holmatro.com

All over the world



Holmatro Hydraulic Solutions

Lissenveld 30
4940 AB Raamsdonksveer,
Netherlands

T +31 (0) 162 751 500
holmatro.com

Disclaimer - While this document has been prepared with due care, it may contain errors or omissions. Holmatro B.V. and its affiliated companies (hereafter: Holmatro) cannot be held liable in any way for the consequences of activities undertaken based on this printed matter. If you have any doubts about the correctness or completeness of the information, please feel free to contact Holmatro (phone number: +31 (0)162-751500. Nothing from this printed matter can be copied and/ or made public in any way without the explicit authorization of Holmatro.

POWERING INNOVATION

holmatro.com



Holmatro Hydraulic Solutions



Holmatro Hydraulic Solutions



hydraulicsolutions@holmatro.com



+31 (0) 162 751 500

ISO 9001
ISO 14001
ISO 45001

BUREAU VERITAS
Certification

