

## Technical specification sheet

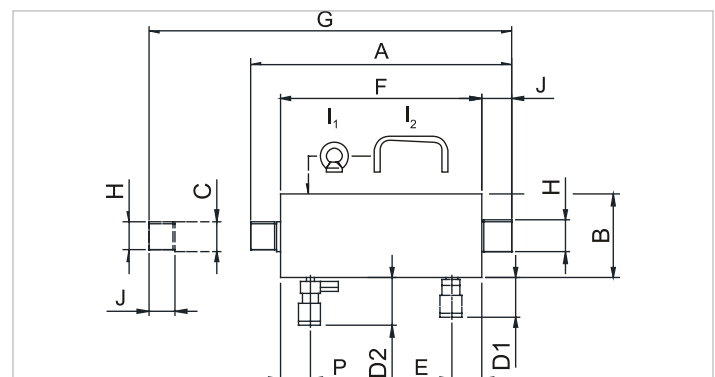
# HPJ 11 S 15 | Pulling Cylinder

Specifications		
article number		100.131.001
short description		Pulling Cylinder
model		HPJ 11 S 15
max. working pressure	psi	10443
tonnage	lb	24251.0
stroke	in	5.9
capacity	lbf	25403
effective pressure area	sq. in.	2.4
required oil content (effective)	oz	8
connection		A 118
cylinder type		pulling
acting type		single
return type		spring
material		steel
weight, ready for use	lb	25.4

Technical drawing dimensions		
dimension A	in	12.6
dimension B	in	3.6
dimension C	in	1.6
dimension D2	in	3.3
dimension F	in	9.8
dimension G	in	18.5
dimension H	threadsize	M38x1.5
dimension J	in	1.2
dimension P	in	1.5

Standard supplied with	
• High flow female coupler A118, with pressure relief valve A418	

Required Accessories	
Pulling Eye HPJ 11/30 - 2 Required	100.181.051
Clevis Eye 11 Ton - 2 Required	100.181.056
Protection Spring HPJ 11/30 S 15	100.581.160



holmatro.com

© Holmatro 2025-10-01

While the greatest care has been devoted to the content, it is possible that the information in this printed matter is incorrect or incomplete. Holmatro B.V. and its affiliated companies (hereafter: Holmatro) cannot be held liable in any way for the consequences of activities undertaken on the basis of this printed matter. Values can vary within the manufacturer measurements. If you have any doubts about the correctness or completeness of the information, you shall contact Holmatro (T +31 (0)162-751480). Nothing from this printed matter can be copied and/or made public in any way without the explicit authorisation of Holmatro.