

Technical specification sheet

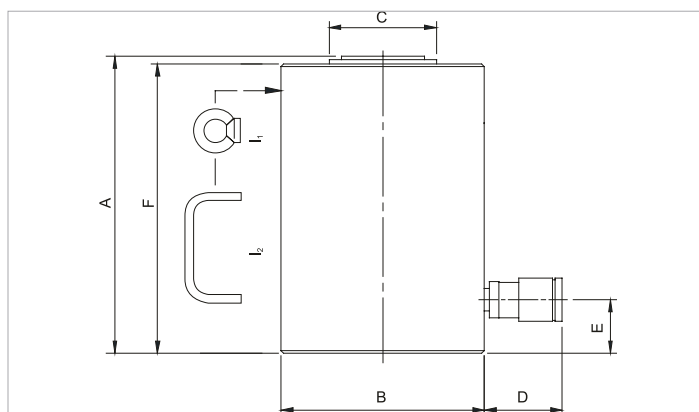
HJ 300 G 15 | Cylinder

Specifications		
article number		100.112.050
short description		Cylinder
model		HJ 300 G 15
max. working pressure	bar/Mpa	720 / 72
tonnage	t	300
stroke	mm	150
closed height	mm	382
capacity	kN/t	2933 / 299.1
effective pressure area	cm ²	415
required oil content (effective)	cc	6225
required oil content (press)	cc	6225
connection		A 118
cylinder type		high tonnage
acting type		single
return type		gravity
material		steel
weight, ready for use	kg	238.0

Technical drawing dimensions		
dimension A	mm	382
dimension B	mm	316
dimension C	mm	190
dimension D	mm	70
dimension E	mm	70
dimension F	mm	370
I type		[I1]

Standard supplied with	
• High flow female coupler A118	
• Flat saddle	

Accessories	
Tilting Saddle S 500 TN	100.999.232



holmatro.com

© Holmatro 2025-09-29

While the greatest care has been devoted to the content, it is possible that the information in this printed matter is incorrect or incomplete. Holmatro B.V. and its affiliated companies (hereafter: Holmatro) cannot be held liable in any way for the consequences of activities undertaken on the basis of this printed matter. Values can vary within the manufacturer measurements. If you have any doubts about the correctness or completeness of the information, you shall contact Holmatro (T +31 (0)162-751480). Nothing from this printed matter can be copied and/or made public in any way without the explicit authorisation of Holmatro.